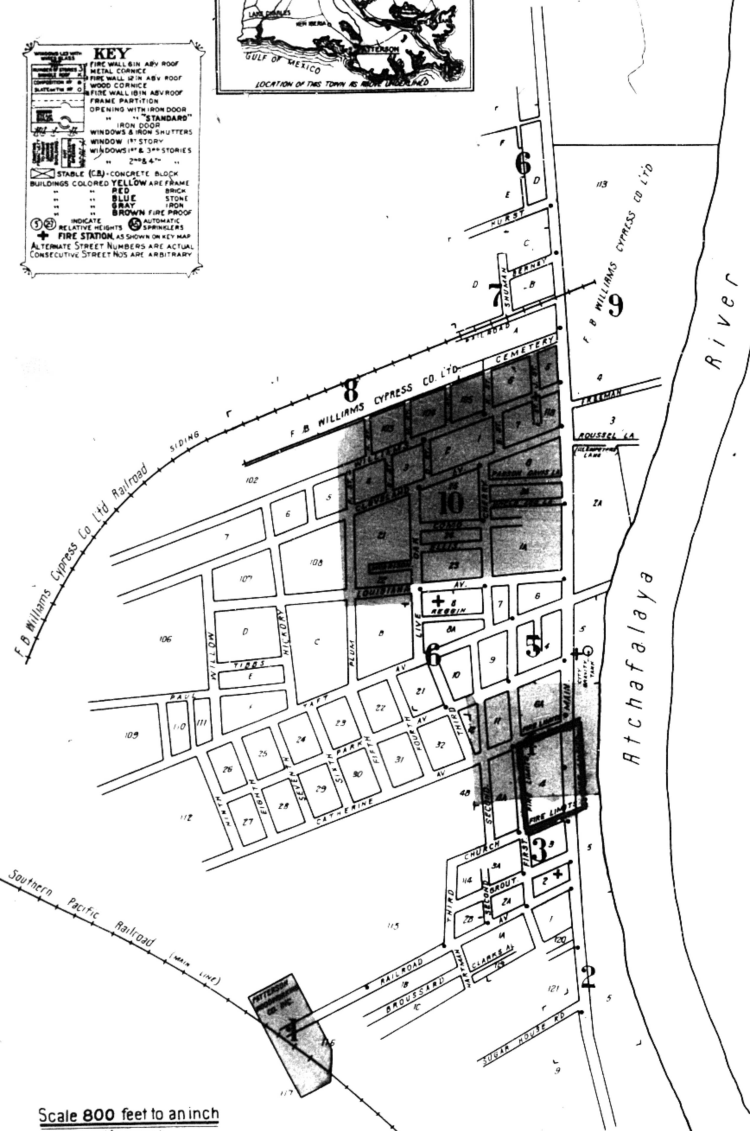


KEY

- FIRE WALLS: ARMY ROOF, METAL CORNICHE, WOOD CORNICHE, WHITE WALL WITH AERO ROOF, FRAME PARTITION, OPENING WITH WOOD DOOR, "STANDARDS", IRON DOOR, WINDOWS & IRON SHUTTERS, WINDOW 11' STORY, WINDOWS 11' & 3 1/2' STORIES, 2 1/2' & 4' "
- BRICK (B) CONCRETE BLOCK, BUILDINGS COLORED: YELLOW FRAME, RED, BLUE, BRICK, STONE, IRON, BROWN FIRE PROOF
- ROCKETS, RELATIVE HEIGHTS, SPRINKLERS, FIRE STATION, SHOWS ON KEY MAP, ALTERNATE STREET NUMBERS ARE ACTUAL, CONSECUTIVE STREET NUMBERS ARE ARBITRARY



WATER FACILITIES -

Municipal ownership. Water supply furnished by F.B. Williams Cypress Co. See sheet No. 9. Source of supply Atchafalaya River. Direct and gravity pressure 90 to 30 lbs. pressure per square inch. 2 Underwriters fire pumps capacity 1000 gallons per minute each (Not one of these fire pumps is property of Lumber Co. The other owned by City). Auxiliary supply, 2 3000 gallon gravity tanks (1 1/2) elevated 75 to base of tank, see sheet No. 5, 6 and 8 water mains 32" Double hydrants. Average daily consumption of water about 300,000 gallons.

FIRE DEPARTMENT -

Volunteer. 2 Companies about 15 Men each. 2 hose towers location and equipment as follows: Hose No. N1 (Sheet No. 9) 1 hose cart with 350' 2 1/2" C.R.L. hose. Hose No. N2 (Sheet No. 5) 1 Auto driven, American La France pump hose and chert with 250' 2 1/2" C.R.L. hose and 100' 1 1/2" chert hose 140 gal. chert 1 1/2" & L. pail with 75 of ladders. Hose No. N3 (Sheet No. 6) 1 hose cart with 350' 2 1/2" C.R.L. hose. Hose No. N4 (Sheet No. 10) 1 hose cart with 350' 2 1/2" C.R.L. hose. Fire alarm system whistle at F.B. Williams Cypress Co. Mill and telephones. Grades level. Streets, mostly shell paved. Public electric lights.



© C.P. 18117

JUN 13 '27

INDEX

STREETS	AREAS	M	AREAS	B	AREAS
A Street	10	Main	26-83	2	Baptist Church (Colored)
Aetion Place (arbitrary)	6		82-131	3	
Alton Place (arbitrary)	6		132-136	4	Episcopal Church
Avon Place (arbitrary)	9		133-137	3	
B Street	10		138-185	4	Fire Department, Hose Co. No. 1
Berney	1 30	7	186-194	4	2
			187-195	4	3
			196-229	5	4
			230-308	9	
			231-233	10	
Catherine Ave.	1 38	4	235-321	10	Good Hope Baptist Church (Colored)
Cherry	5 & 10		323-359	6	
Church	1-48	2	361-423	6	
Clark's Alley	10	Morrison			10 Hotel Bernader
Cleveland Ave.	10				
Como	10				
D Street	10	N Street			10 I. O. F. Lodge (Colored)
E Street	10				
Ellis	10	Park Ave.	1 20	5	Jail
			21 41	5	
			22 40	4	
			42 49	4	K. of C. Hall
			near Third	6	
F Street	10	Parson Davis Lane			Louisiana Moss Products Co.
First	1 24	2 Plum			Public Utilities Co., Ice Factory
	25-66	3			Red Cypress Co., Tenant Mill
	67 79	3			
	68 78	4			
	80 123	4	1-34	7	Masonic Hall
	124-126	5	5 & 6	9	Methodist Episcopal Church
	125 127	4			
	128 159	5			
Freeman	9	Second	1 60	2 & 3	New Salem Baptist Church
Grout	1 50	3	61 104	4	
			105 128	5	
			1 12	3	Patterson Woodworking Co.
			1 28	7	Post Office
				2	Public School
Hurst	1 32	6			
J Street	10	Taft, Third	5, 6 & 9	6	Russo, L. J., Moss Gin
K Street	10	Uncle Ab's Lane			
Kleinpeters Lane, see Roussel Lane					
L Street	10	Williams			
Live Oak	6 & 10				
Louisiana Ave.	1 69	10			
	2 44	5			
	46 69	6			
	70 99	10			
	101 136, arbitrary	10			

SPECIALS

A	Williams, F. B., Cypress Co.	7, 8 & 9
Z	Zion Chapel M. E. Church (Colored)	10

* Indicates only one side of Street shown.

Scale 800 feet to an inch (Approx.)